

Sidewalk Condemnation, Reconstruction, and Repair Standards Pursuant to Salina Code Section 31-700

The following standards shall be used by the City Manager or his designee pursuant to Section 31-700 as a guide to determine if a sidewalk is in need of condemnation and reconstruction. The standards shall also be used by the City Engineer pursuant to K.S.A. 12-1808 to determine if a sidewalk is in need of repair.

Brick Sidewalk Defects

Bricks are missing, settled, or spalled resulting in excessive cross-slope, heaving, separation, cracking, etc. (Remedy: reset or replace)

Excess Cross-Slope

Exceeds 5/8" per foot or greater measured with width of sidewalk (Remedy: lift or replace)

Heaving or Settlements between Panels

Vertical deviation of the grade equal to 1-1/2" or more (Remedy: lift, reset, or replace)

Horizontal Separation

Gaps equal to 1-1/2" or greater (Remedy: fill or replace)

Linear Cracking

A single panel that is cracked into more than four individual sections or in such a manner that the sidewalk constitutes a danger to the public (Remedy: replace)

Missing Pavement

A sidewalk or driveway with any section missing to the full depth (Remedy: patch or replace)

Surface Defects or Spalling

Spalling or loose material over 33 percent of a single panel, including holes or depressions equal to or greater than 1/2 inch in depth or diameter (Remedy: patch or replace)

Vegetative Overgrowth

Grass or landscaping encroaching onto or through 33% of the concrete or brick sidewalk area (Remedy: remove vegetation to full width of sidewalk)

Vertical Separation

Trip hazard equal to 3/4 inch or greater (Remedy: grind, cut, lift, or replace)

Sidewalk & Driveway Repair Criteria Non-Compliant Guidelines

Brick Sidewalk Defects

Bricks are missing, settled, or spalled (Remedy: reset or replace)



Excess Cross-Slope

Exceeds 5/8" per foot or greater measured with width of sidewalk (Remedy: lift or replace)



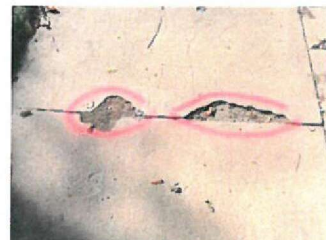
Heaving or Settlements between Panels

Vertical deviation of the grade equal to 1 1/2" or more (Remedy: lift, reset, or replace)



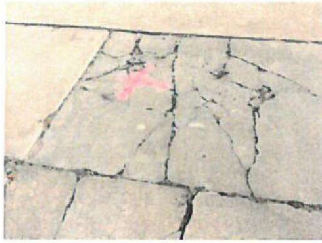
Horizontal Separation

Gaps equal to 1 1/2" or greater (Remedy: fill or replace)



Linear Cracking

A single panel that is cracked into more than four individual sections or in such a manner that the sidewalk constitutes a danger to the public (Remedy: replace)



Missing Pavement

A sidewalk or driveway with any section missing to the full depth (Remedy: patch or replace)



Surface Defects or Spalling

Spalling or loose material over 33 percent of a single panel, including holes or depressions equal to or greater than 1/2 inch in depth or diameter (Remedy: patch or replace)



Vegetative Overgrowth

Grass or landscaping encroaching onto or through 33% of the concrete or brick sidewalk area (Remedy: remove vegetation to full width of sidewalk)



Vertical Separation

Trip hazard equal to 3/4 inch or greater (Remedy: grind, cut, lift or replace)

